

# FLORIDA STATE CYCLING



## Presents The Seminole Cycling Classic

### Saturday, February 20<sup>th</sup> Team TT & Individual TT (Morning)

**Time:** First rider to start at 9am and set off at 1 minute intervals (Teams at 2 min intervals) in the following order: Men's TTT, Women's TTT, Men's A, Men's B, Women's A, Men's C, Women's B.

**Course:** 13.2mile loop out and back on the hills of Havana.

**Directions:** Head North on Hwy 27/Monroe Street out of Tallahassee until you reach Havana. Make a left on 9<sup>th</sup> Ave W. Than make a right on Salem Rd. Continue on Salem Rd/hwy159 until you reach the race site.

**Address:** 9387 Salem Rd, Quincy, Florida

**Registration:** ALL racers must register by 8:30am of race day to be included in the time trial. Registration booth will be open by 7:30am.

### Saturday, February 20<sup>th</sup> Road Race

**Time:** Races will start at 1pm in 5 min waves in the order below

**Course:** 16 Mile Loop along the Havana Hills that will rip your legs off. Nice empty country roads and all right turns!

**Directions:** Head North on Hwy 27/Monroe Street out of Tallahassee until you reach Havana. Make a left on 9<sup>th</sup> Ave W. Than make a right on Salem Rd. Continue on Salem Rd/hwy159. Than make a left on Port Milligan Road and continue until you reach the race site.

**Registration:** Closes 30 minutes before race start

Time	Category	Distance
1:00pm	Men's A	64miles
1:05pm	Men's B	48miles
1:10pm	Women's A	48miles
1:15pm	Men's C	32miles
1:20pm	Women's B	32miles



Held Under USA Cycling Event Permit



## Sunday, February 21<sup>st</sup> Crit (Morning)

**Time:** Races will start at 9am and continue on the schedule below

**Course:** Approximately 1 mile loop, with 1 roundabout turn and small climb in a residential neighborhood of Sleepy Hollow.

**Directions:** Google Map Directions: <http://goo.gl/P3as> North on Monroe St, slight right on FI-61/Thomasville Rd, Left at Ox Bottom Rd, Turn left to stay on Ox Bottom Rd, Turn right at Ox Bow Rd, Turn left at Ox Bow Cir, Turn left at Ox Bow Way, Slight right toward Sleepy Hollow. Staff will direct you towards proper parking areas.

**Registration:** **ALL** racers must register 30minutes before their event on race day to be included. Registration booth will be open by 7:30am.

Category	Duration	Start time
Men's C	30 min + 3 laps	9:00 AM
Men's B	45 min + 3 laps	9:45 AM
Women's A + B	45 min + 3 laps	10:45 AM
Men's A	60 min + 3 laps	11:45 AM

### General Race Information:

- Races will run rain or shine.
- All USCF rules apply. Permit pending.
- Promoter reserves right to cancel or combine categories.
- Portable restrooms will be available at the parking area. Please use them. Anyone caught doing otherwise will be disqualified without refund.
- Remember the road for the TT and RR are open, so obey the rules, use caution, and yield to emergency vehicles.
- To pre-register for races please e-mail Jack Tomassetti ([jrt08c@fsu.edu](mailto:jrt08c@fsu.edu)) with the following information for each rider by February 18th.
  - Name
  - Category
  - License #
  - Race Number
  - Events
- Races are **\$14 per event per person. \$28 for every TTT team.**
- Please make checks payable to "Florida State Cycling"
- Please Pre-Register by Thursday at midnight: <http://goo.gl/sUrE>

### Contact

Jack Tomassetti – [jrt08c@fsu.edu](mailto:jrt08c@fsu.edu) – Cell: 904-415-3833  
Bryan Derstine – [bdd06@fsu.edu](mailto:bdd06@fsu.edu) – Cell: 850-509-1276

[www.FloridaStateCycling.com](http://www.FloridaStateCycling.com)



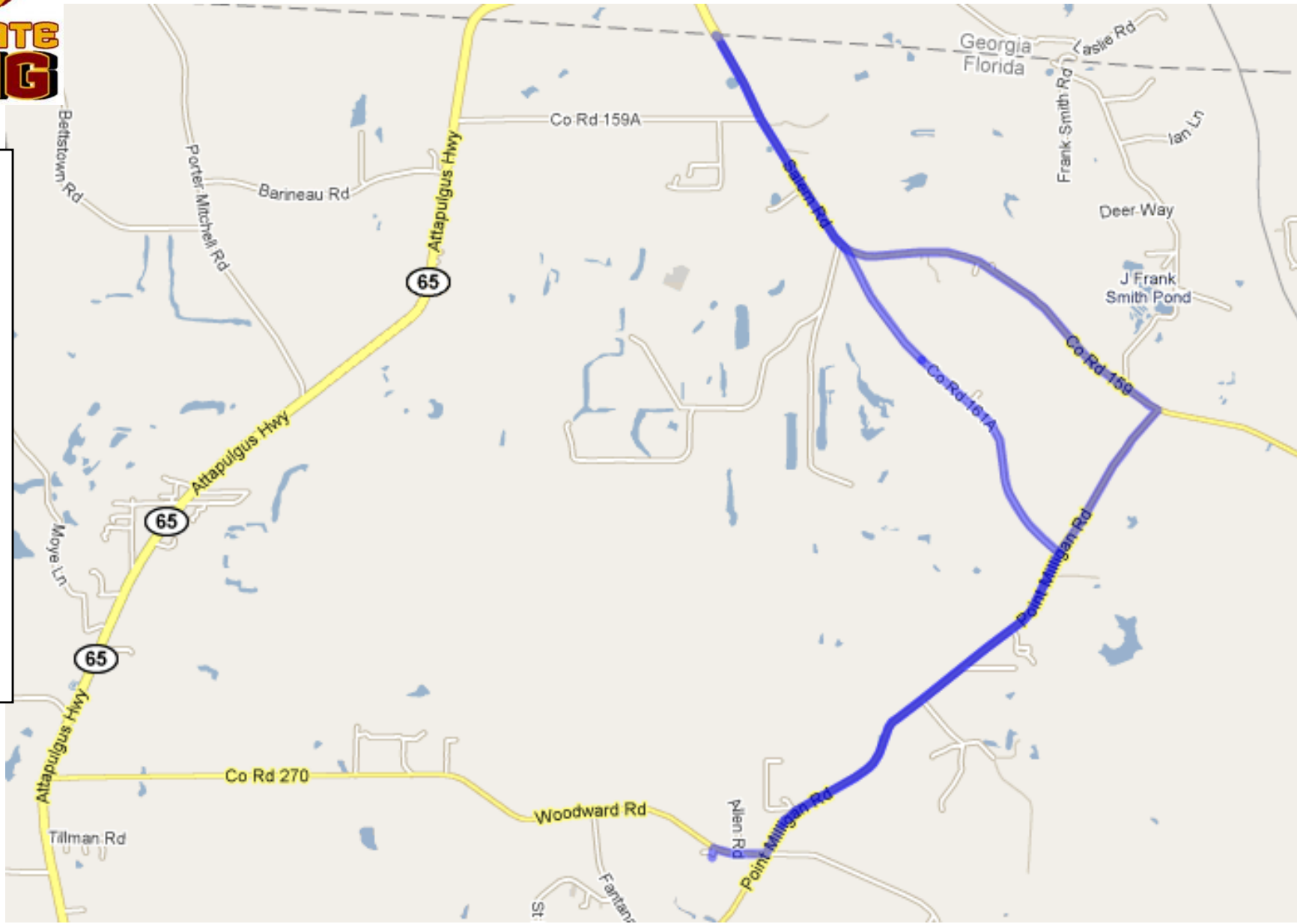
# BRAP! BRAP!



**FLORIDA STATE  
CYCLING**

## FSU TTT & ITT COURSE

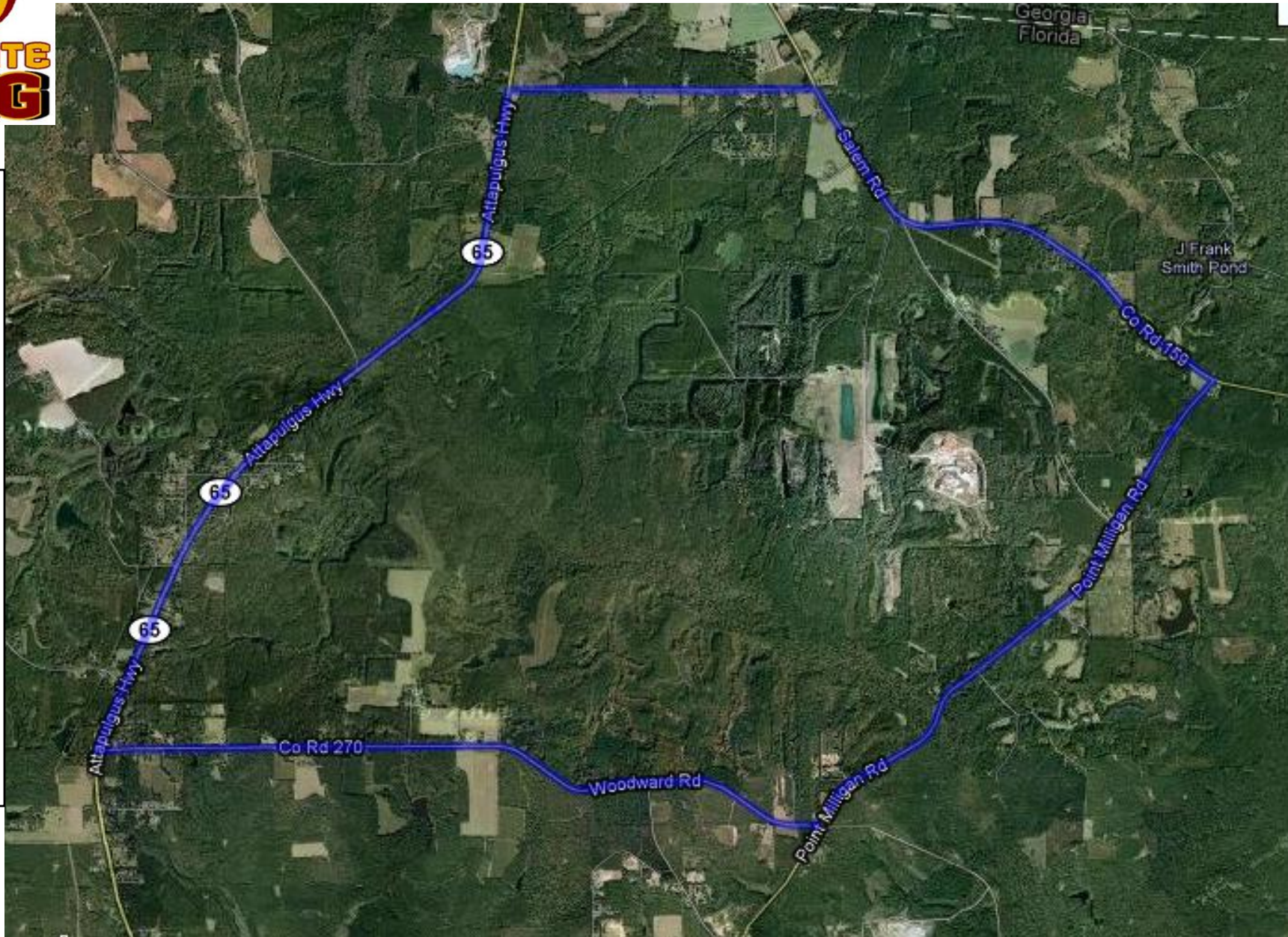
Approximately 13.2-mile course starting and ending at the Georgia/Florida Borderline. Riders will head south and veer right on CR 161A and make a U-turn onto Point Milligan Road a little bit after the climb, and then make their way back to the finish along CR 159.





# FSU ROAD RACE COURSE

Approximately 16 mile loop in nice empty hilly country roads of Florida. The start is located near the corner of Woodward and Point Milligan Rd and goes around the course in a clockwise direction. You won't ever think Florida is flat again after racing on this course.



# FSU CRIT COURSE

Less than 1 mile loop, with no turns, and 1 roundabout, 1 small uphill.

**Directions:** Google Map Directions:

<http://goo.gl/P3as>

North on Monroe St,  
slight right on FI-61/Thomasville Rd,  
Left at Ox Bottom Rd,  
Turn left to stay on Ox Bottom Rd,  
Turn right at Ox Bow Rd,  
Turn left at Ox Bow Cir,  
Turn left at Ox Bow Way,  
Slight right toward Sleepy Hollow.

**Staff will direct you towards proper parking areas.**

